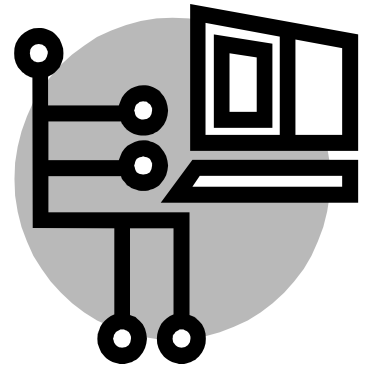


NetStorage is an application that allows students to access their school network files remotely from home. NetStorage will allow students to transfer files to and from school via an Internet connection and will hopefully assist students in being more efficient in their studies both at home and school. Access to a portal page is provided via a link on the District web site. (A portal page is a resource page providing links to a variety of available resources.) Directions to access NetStorage are as follows:

- To access the portal page via the District web site, go to <http://www.pewaukee.k12.wi.us>
- Click on Resources, Student Resources & Links, and then Portal Sign-in
- A username (student) and password (psd) are required to access the portal page
- Click Login
- Click on the NetStorage link where students will be required to know their network login and password to sign into NetStorage



*Network login
information
should be kept
secure and not
shared with other
students!*

The portal page also presents links for tutorials for using this application, including login and file transfer, as well as a link back to the Pewaukee School District home page.

Please be advised that file transfer is dependent upon your connection speed to the Internet. With a dial-up connection, file transfers could range from several minutes to several hours, depending on the size of the file. Please also be advised that students must comply with the District's Acceptable Use Policy when using District technology and when accessing their files from home. The use of NetStorage is to be for data file transfer only and not the transfer of applications or executables.

Please feel free to contact the District's IT Department at helpdesk@pewaukee.k12.wi.us with any questions you may have.