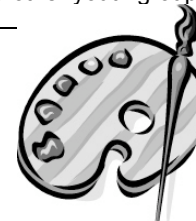
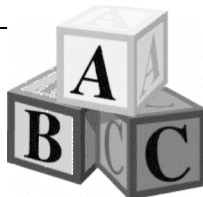
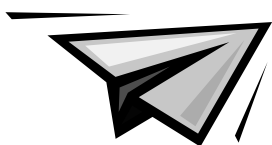
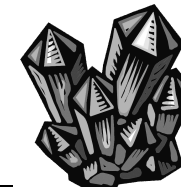


# CELEBRATE SUMMER 2009 WITH SCIENCE, ART & HISTORY!

LOCATION	DESCRIPTION	SPECIAL SUMMER PLANS See details on each website!
<b>Appleton Art Center</b>	Creativity is for everybody! Our mission is to promote, teach and nourish the creation and appreciation of the visual arts through exhibitions, educational programs and information resources.	Ongoing art classes, ages 2 – Adult. <i>Before and After Rembrandt</i> (4/17-7/2). <i>Appleton Art Center Instructor Exhibit</i> : (5/18-6/19) - 3rd floor, <i>Art in the Park</i> (7/26) – fine art, food, and kid's art in City Park. <i>A World of Post Impressionism</i> (7/17-9/5) – paintings by European & American artists of the late 19 <sup>th</sup> Century.
<b>Barlow Planetarium</b>	Sharing the wonders of the universe with Northeast Wisconsin for over 10 years. Explore the starry nighttime sky, visit the planets, travel to galaxies and beyond in Wisconsin's first world-class planetarium.	Summer field trip programs for youth and daycare groups that are both educational and entertaining. <i>Wisconsin Space Academy</i> , summer week-long rocketry classes for 2 <sup>nd</sup> -8 <sup>th</sup> graders featuring hands-on science and engineering activities.
<b>Bergstrom-Mahler Museum</b>	Be inspired at the art glass museum on Lake Winnebago. The museum preserves four glass collections: a world-renowned paperweight collection, a Germanic drinking vessel collection, Victorian baskets and contemporary sculpture. See changing exhibitions in a variety of media.	<i>Myth &amp; Magic and Telling Stories Out of School</i> : Children's Book Illustrations (through 6/21), <i>Millefiori: the Power of Flowers</i> —photorealistic paintings (7/5-9/27), <i>Arts Festival</i> at Riverside Park (7/19)
<b>The Building for Kids</b>	30,000 sq. feet of family fun. 2-story tree with five tree forts, water play area, art and science studio, kids town, airplane, fire truck and much more!	<i>Let's Play Railway!</i> , a giant replica of BRIO's famous wooden toy <i>Engine, Cattle Wagon and Caboose</i> (5/29 -9/13). Climb aboard this interactive exhibit developed by the Betty Brinn Children's Museum in cooperation with BRIO. Sponsors for the exhibit are Guardian Insurance and John and Sally Mielke.
<b>The Charles A. Grignon Mansion</b>	Return to the last colorful days of Wisconsin's fur trade era! Costumed guides lead visitors through this 1837 mansion and tell the story of the Grignon family, their home, and everyday life on the Wisconsin frontier.	Tours scheduled by appointment. See website for details.
<b>Hearthstone Historic House Museum</b>	Visit the first house in the world lit by hydroelectricity! This stunning Victorian home overlooking the Fox River was built in 1882. Learn about Appleton's history, the customs of Victorian America, and early electrical innovations. Have fun in the downstairs Hydro-Adventure center.	Explore the <i>Lost Photographs of Thomas A. Edison</i> , the summer exhibit. Check website for numerous Brownie and Junior Girl Scout badge programs.
<b>The History Museum at the Castle</b>	Perform magic for your friends and family or compare your vertical jump with that of basketball greats; escape from jail like Houdini or transform into your favorite local sports hero. Explore history through hands-on activities at The History Museum where children of all ages are welcome!	Play historic sports on the lawn, make paper the "old fashioned way" or watch history come to life through three Plays on History performed in the museum's exhibits. Check our website for changing programming.
<b>Paper Discovery Center</b>	Explore the world of paper through the study of science, technology, art & history. Make paper, climb through a paper machine, move a boat through the locks, and much more.	<i>Summer Science Series</i> sponsored by SCA Tissue. Extra hands-on science activities, starting the 3 <sup>rd</sup> & 4 <sup>th</sup> Wed of June, July and Aug and running through Saturday. Each week focused on a new science concept. Included in regular admission price.
<b>Weis Earth Science Museum</b>	Rock your World at the Weis! Explore the geology of our planet & our state. Make an earthquake, walk through a lead mine, detonate a quarry blast, see & touch real dinosaur fossils, and much, much more!	<i>Wisconsin Earth Adventure</i> summer geology camp: Week-long, hands-on, interactive geology programs in 4 levels for 3rd-7th graders.  Fun guided tours for daycare and other youth groups — all ages!



Keep your kids learning this summer — Visit these fun & educational Fox Valley museums & science centers!



LOCATION	ADDRESS & BUS RTE.	CONTACT INFORMATION	SUMMER HOURS	ADMISSION
<b>Appleton Art Center</b>	111 W. College Ave. Appleton; <i>All Bus Routes to Downtown Transit Center</i>	920-733-4089 <a href="http://www.appletonartcenter.org">www.appletonartcenter.org</a>	M-Th: 9-5pm F: 9-9pm Sat: 10-4pm	Suggested Admission: Members Free Adults \$4; Students & Seniors \$3 Children 10 and Under Free
<b>Barlow Planetarium</b>	UW-Fox Valley 1478 Midway Rd. Menasha <i>Bus Route 1</i>	920-832-2848 <a href="http://www.barlowplanetarium.org">www.barlowplanetarium.org</a>	<i>Show Times</i> Tu-F: 2:30pm Sat & Sun: 1:30, 2:30 & 3:30 pm F& Sat: 7&8pm	All shows: Adults \$7 College (w/ ID) & Students (13-18) \$6 Seniors & Children (3-12) \$5
<b>Bergstrom-Mahler Museum</b>	165 N. Park Ave. Neenah; <i>Bus Routes 30, 31, 32, 41(all to Church &amp; Wisconsin Ave.)</i>	920-751-4658 <a href="http://www.bergstrom-mahlermuseum.com">www.bergstrom-mahlermuseum.com</a>	Tu-F: 10-4:30pm Sat: 10-4:30pm Sun: 1-4:30pm	Free, donations appreciated
<b>The Building for Kids</b>	100 W. College Ave. Appleton; <i>All Bus Routes to Downtown Transit Center</i>	920-734-3226 <a href="http://www.TheBuildingforKids.org">www.TheBuildingforKids.org</a>	Tu-F: 9-5pm Sat: 10-5pm Sun: 12-5pm	Adults & Children \$7.00 under 1 yr. – free. Children must be accompanied by an adult
<b>Charles A. Grignon Mansion</b>	1313 Augustine St. Kaukauna <i>Bus Route 20 (+ walk)</i>	920-766-3122 <a href="http://www.myhistorymuseum.org/grignon">www.myhistorymuseum.org/grignon</a>	Open for groups by appointment only	Adults \$7.50, Senior & Student \$5.50, Children \$3.50 (under 5 free) Families: \$20
<b>Hearthstone Historic House Museum</b>	625 W Prospect Ave. Appleton <i>Bus Routes 2, 30</i>	920-730-8204 <a href="http://www.hearthstonemuseum.org">www.hearthstonemuseum.org</a>	Tu-F: 10-3:30 pm Sat: 11-3:30 pm	Adults \$5 Children (5-17): \$2.50
<b>The History Museum at the Castle</b>	330 E. College Ave. Appleton; <i>All Bus Routes to Downtown Transit Center</i>	920-735-9370 <a href="http://www.myhistorymuseum.org">www.myhistorymuseum.org</a>	M-Sat: 10-4pm Sun: 12-4pm Thurs: 10-8pm	Adults \$7.50, Senior & Student \$5.50, Children \$3.50 (under 5 free) Families: \$20
<b>Paper Discovery Center</b>	425 W. Water St. Appleton <i>Bus Routes 2, 30</i>	920-380-7491 <a href="http://www.PaperDiscoveryCenter.org">www.PaperDiscoveryCenter.org</a>	M-Sat: 10-4pm	Adults \$5, Children \$3 Seniors \$4, Families \$12
<b>Weis Earth Science Museum</b>	UW-Fox Valley 1478 Midway Rd. Menasha <i>Bus Route 1</i>	920-832-2925 <a href="http://www.weismuseum.org">www.weismuseum.org</a>	M-Th: 12-4pm, F: 12-7pm Sat: 10-5pm Sun: 1-5pm	Adults \$2, Children 3-12 \$1, Students 12-18 and Seniors \$1.50, under 3 free Free for UWFox students, staff & faculty

Make your trips even more fun & educational—travel on Valley Transit! Freedom Pass is only \$40 for unlimited bus rides June 1-August 31 for ages 5 – 18.

On summer weekends, ride the ADI Trolley throughout downtown Appleton and the riverfront area for FREE!